



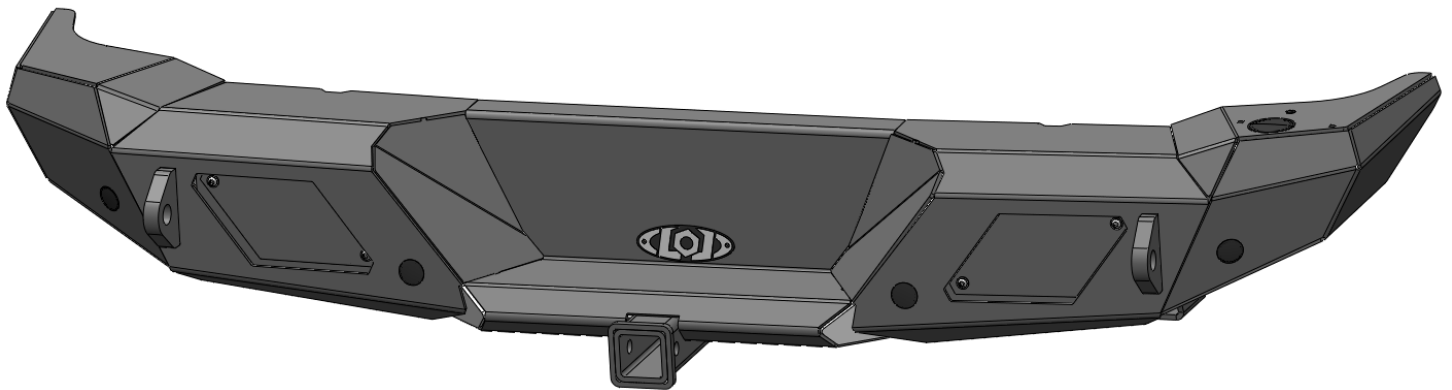
**DESTROYER SERIES**

**BRONCO**

2021 BRONCO  
REAR BUMPER



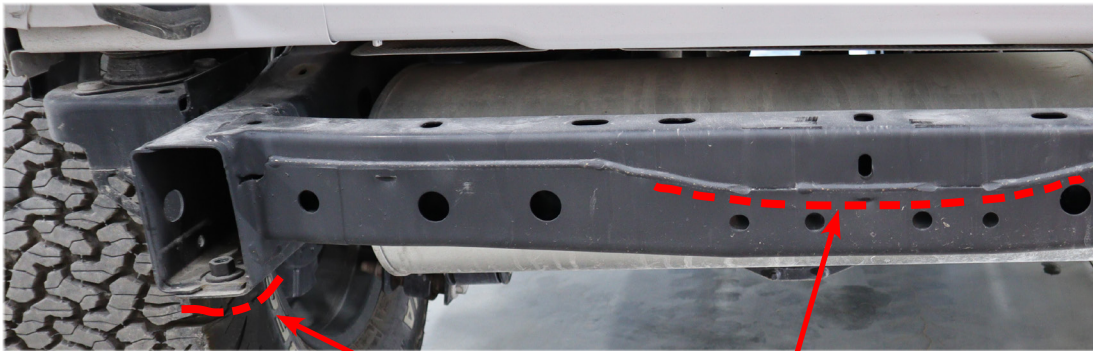
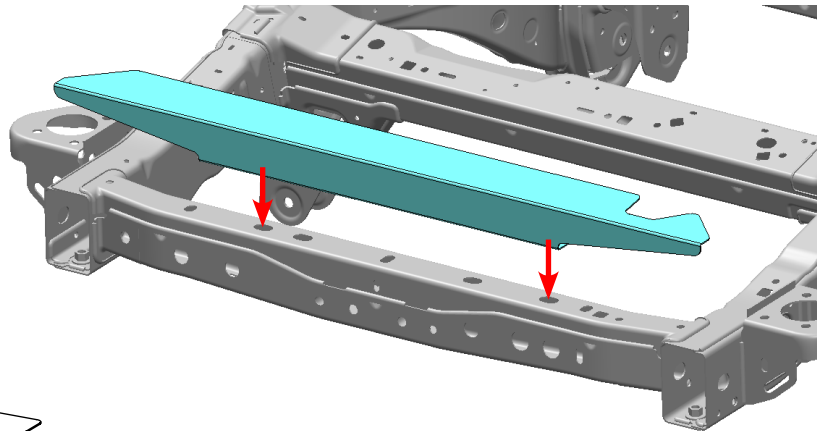
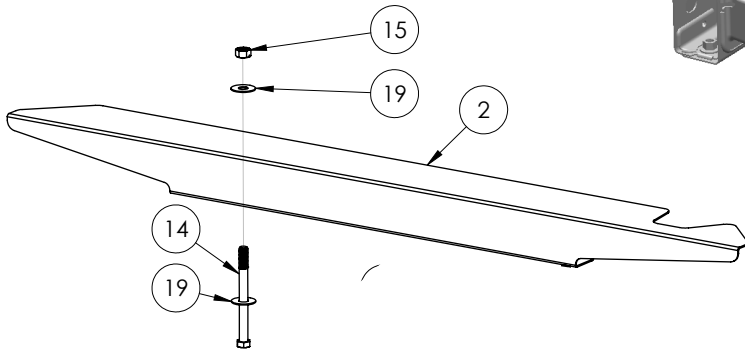
**\*VERIFY YOU HAVE ALL THE COMPONENTS BEFORE STARTING THE INSTALLATION. REFER TO THE ENGINEERING DRAWINGS AT THE END OF THIS DOCUMENT FOR A COMPLETE PARTS LIST\***



Start by removing your stock rear bumper and trailer hitch if you have one. You will also want to remove the bumper mounting brackets



With the bumper removed, install the Tailgate Filler Panel on top of the rear crossmember using the 7/16 x 5.00" long Hex Bolts, Nuts and Washers. Leave this part loose until after you install your bumper.



Check these areas for over-size or drippy welds

Before installation be sure to check your the bottom of your frame and the crossmember near where the trailer hitch mounts for any oversize or drippy welds. The bottom of the frame and the crossmember should be smooth, if not you will need to grind the welds down slightly. Be sure to touch up the grinding area with paint to prevent rust.

## Parking Sensor Installation

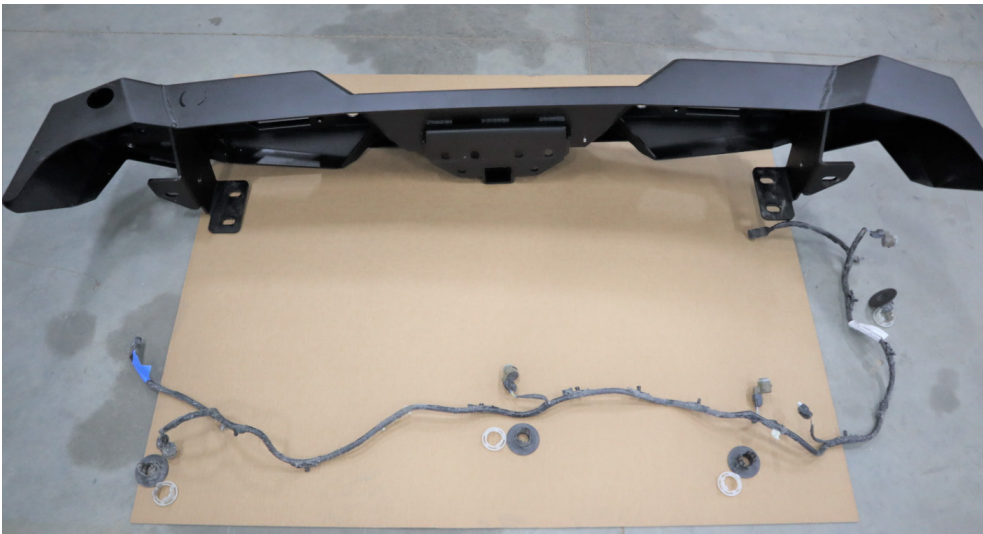
If you do not have parking sensors, skip these steps and install the provided plastic hole plugs.

We recommend using the sensor mounting bezels from your stock bumper to mount the sensors into your new LOD bumper. However you can also obtain sensor bezels from your local Ford dealer or online. Listed below are the part numbers for the inner and outer bezel for each position.

You will need to remove the sensors from the mounting bezels before removing the bezel from the stock bumper. Once the sensors are removed you can then easily unclip the bezels from the bumper.

**\*\*\*Be sure to note the location of each bezel and the orientation of the sensor and bezel on the bumper. You will need to install these in the same position and orientation on your new LOD bumper. It is helpful to take a few pictures of the sensors in the stock bumper before you remove them.\*\*\***

Remove the sensor wiring harness from your stock bumper. Be sure to label the end of the wire harness so you don't install it backwards. We simply added a piece of blue masking tape to the connector on the wire harness, and another piece of blue tape to its matching connector on the Bronco.



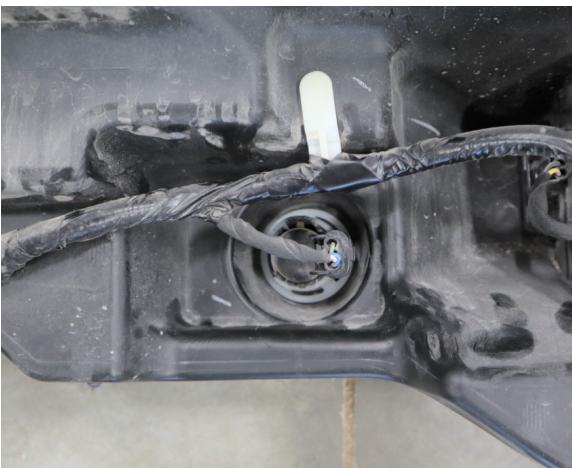
### Ford Sensor Bezel Part Numbers:

REAR INNER LEFT  
M2DT-15K873-A1BW  
M2DT-15K870-B1BW

REAR INNER RIGHT  
M2DT-15K872-A1BW  
M2DT-15K870-B1BW

REAR OUTER RIGHT  
M2DT-15K870-A1BW  
M2DT-15K870-B1BW

REAR OUTER LEFT  
M2DT-15K871-A1BW  
M2DT-15K870-B1BW



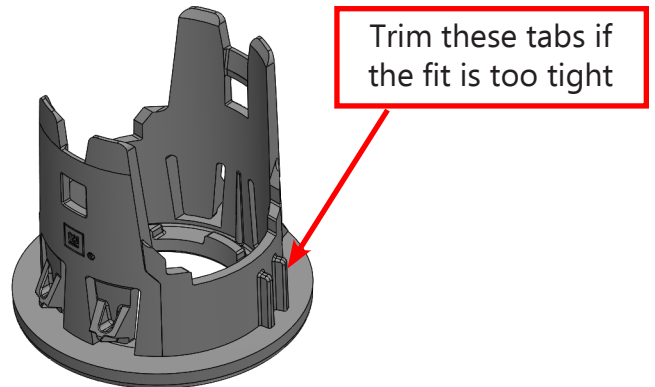
Install the sensor mounting bezels into your new LOD bumper by snapping the bezel into the existing hole. Make sure you install the bezels into the same locations in which they were removed.



The mounting holes in your LOD bumper were designed to fit a standard sensor bezel. Depending on the style of your sensors and bezels, your sensor bezel could fit a little tight or loose or may need some trimming.

If the bezel fits loose, simply add a little silicone or other adhesive to the backside to hold the bezel firmly in the mounting hole.

If the bezel fits too tight in the mounting hole, simply trim the small tabs on the side of the bezel using a razor blade to get a snug fit.

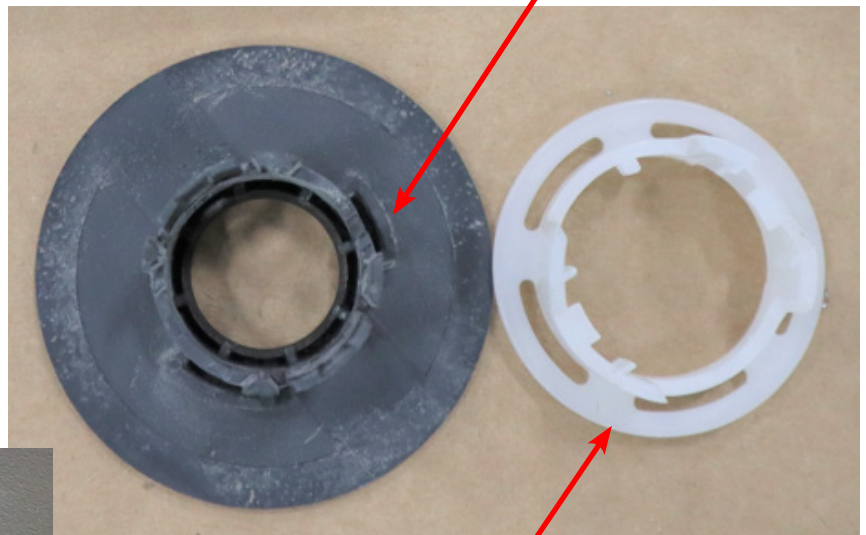


If your bezels look like the ones picture here, you will need to trim both pieces to fit.

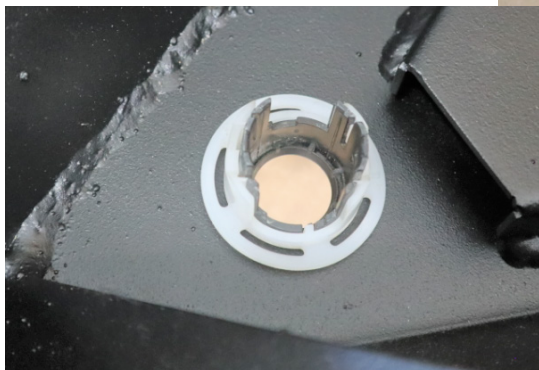
First trim off the orientation ribs on the black outer bezel. Then try fitting the bezels into your new bumper.

If the white inner bezel doesn't snap into place, you may need to trim the little spacer tabs to allow it to fit.

Trim these orientation tabs



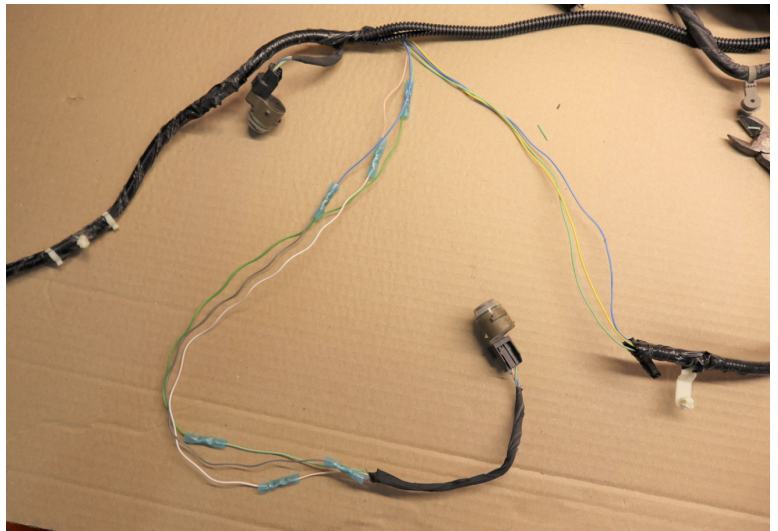
There are 4-5 little spacer tabs that may need trimmed on the bottom of this part



Depending on your stock bumper wire harness, you may need to extend one of the sensor wires to fit the wire harness into your new bumper.

Simply pull back the wire sheath on one of the center sensors and splice in a few inches of 22-24ga stranded wire. You can solder or use splice connectors like the ones shown here.

Wrap with new sheathing or electrical tape.



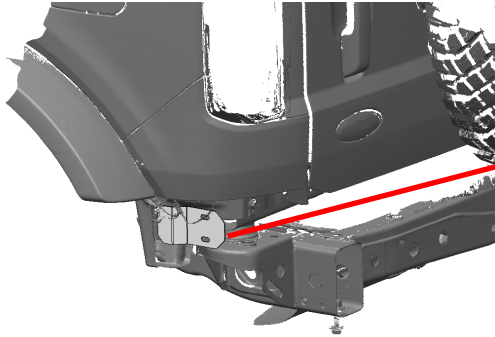
Once your sensor bezels are in place in the bumper, snap the sensor back into the bezel. **\*\*\*Make sure the orientation matches how they were in the stock bumper.\*\*\*** Loosely install the wire harness before installing your bumper. Be sure to secure the wiring harness out of the way to prevent any damage during installation.

Once the bumper is installed, plug in the main wire harness connectors and secure the wire harness out of the way.

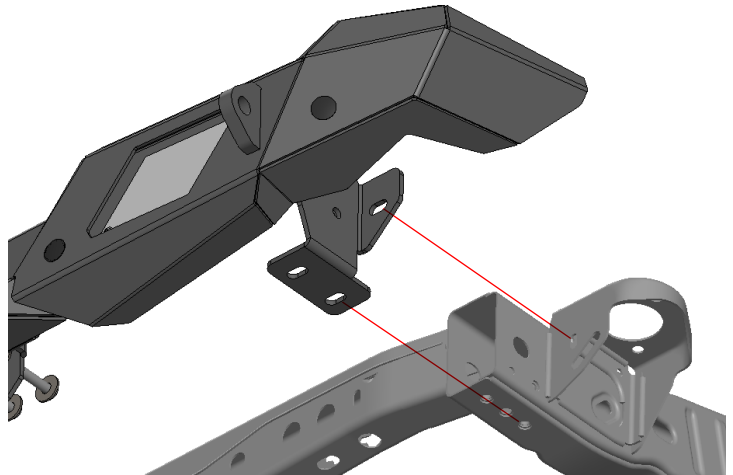
## Bumper Installation

\*\*\*If you are installing an LOD Tire Carrier onto your new bumper, you should install the Spindle into the bumper before installing the bumper on your Bronco. See the installation instructions for the Tire Carrier for more information.\*\*\*

\*Optional\* Install the Corner Guard over the pinch seam on the rear corners of your Bronco using the Ø5/16 Hex Bolts, Nuts and Washers.



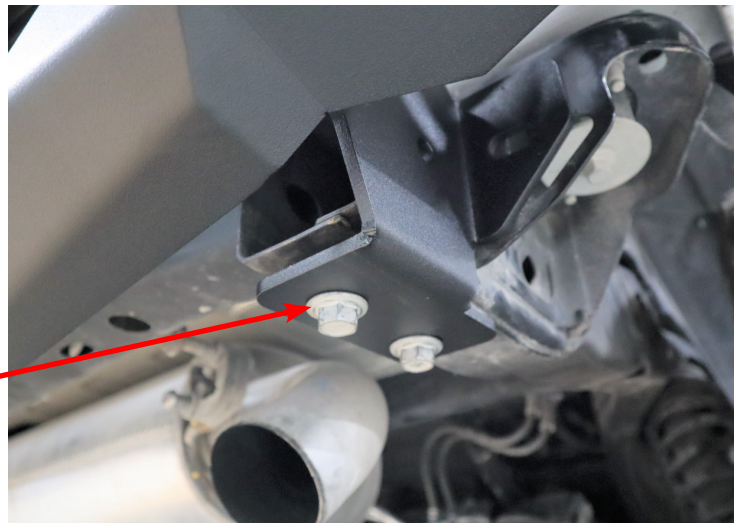
With a helper, position your new LOD Rear Bumper over the frame rails as shown.



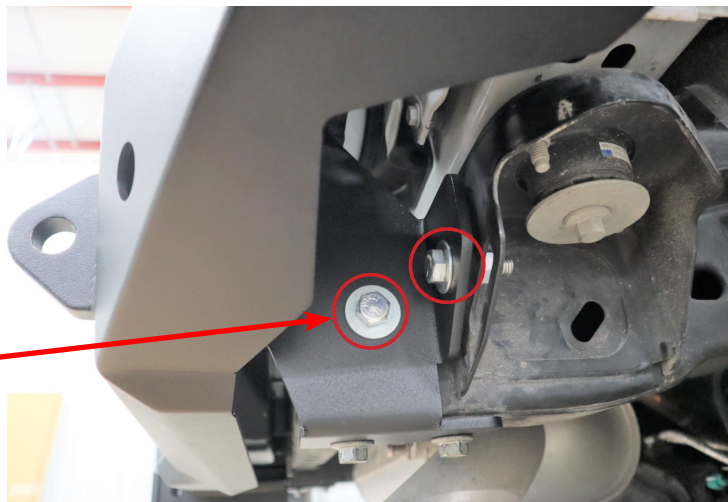
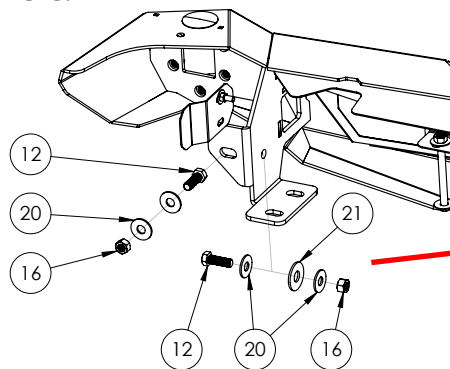
Reuse the two stock bumper bolts to mount the new bumper onto the bottom of the frame rail as shown here.

Leave these bolts loose while you install the rest of the mounting bolts.

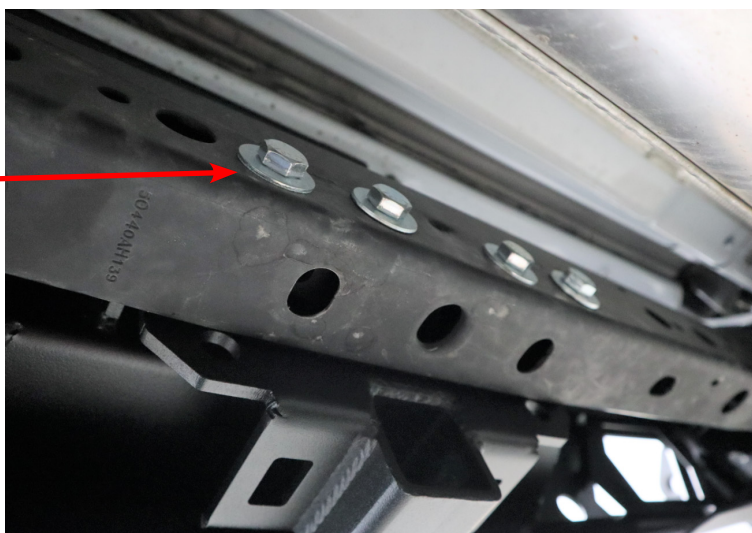
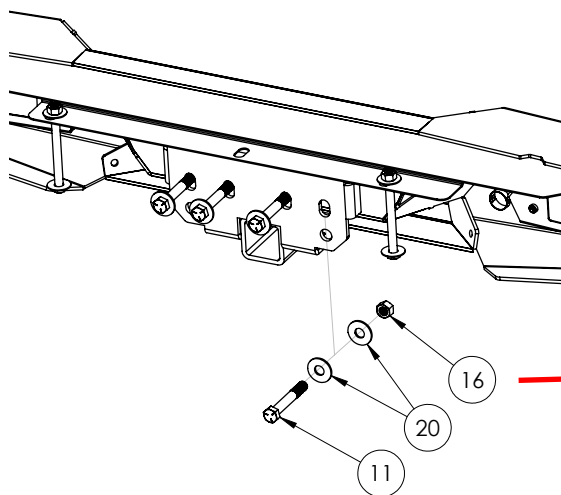
Stock Bumper  
Bolts



Use the provided Ø1/2" Hex Bolts, Nuts and Washers to mount to the frame and body mount as shown here.



Use the long Ø1/2" Hex Bolts, Nuts and Washers to mount to the frame cross member as shown here.



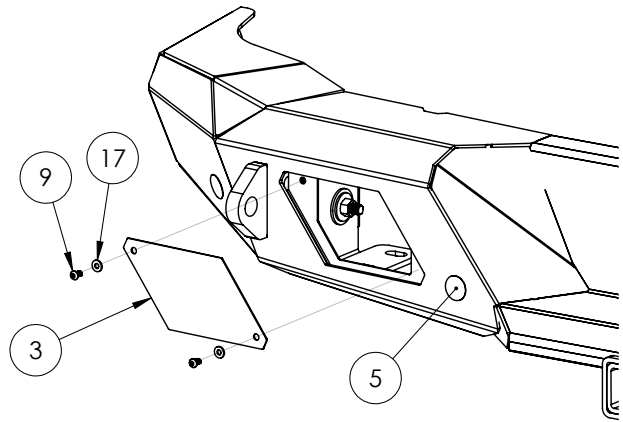
Once all the mounting bolts are installed, securely tight all remaining bolts.

Tighten the four bolts on the frame rails first on each side of the bumper. Make sure all the bolts are snug before fully tightening.

Finish by tightening the four center bolts on the frame cross member.

Finish the installation by installing the Light Bezels using the Ø1/4" Button Head Screws and washers provided.

Dont forget to tighten the two bolts holding the Tailgate Filler Panel that you installed in the first step! The Filler Panel has some adjustability, be sure to leave a little clearance between the body and the panel so they dont rub.



### **\*\*Maintenance\*\***

- Periodically check and re-tighten all fasteners.
- Periodically check your bumper for scratches or dings which can happen over time or after heavy use or highway driving. It is important to address these areas as soon as possible to prevent flaking and corrosion or rust from spreading. We recommend using Rustoleum® brand Black Semi-Gloss Protective Enamel (oil based). Remove loose powder coating, sand the area and clean using alcohol. Apply using a foam brush by dabbing to match the powder coat texture.

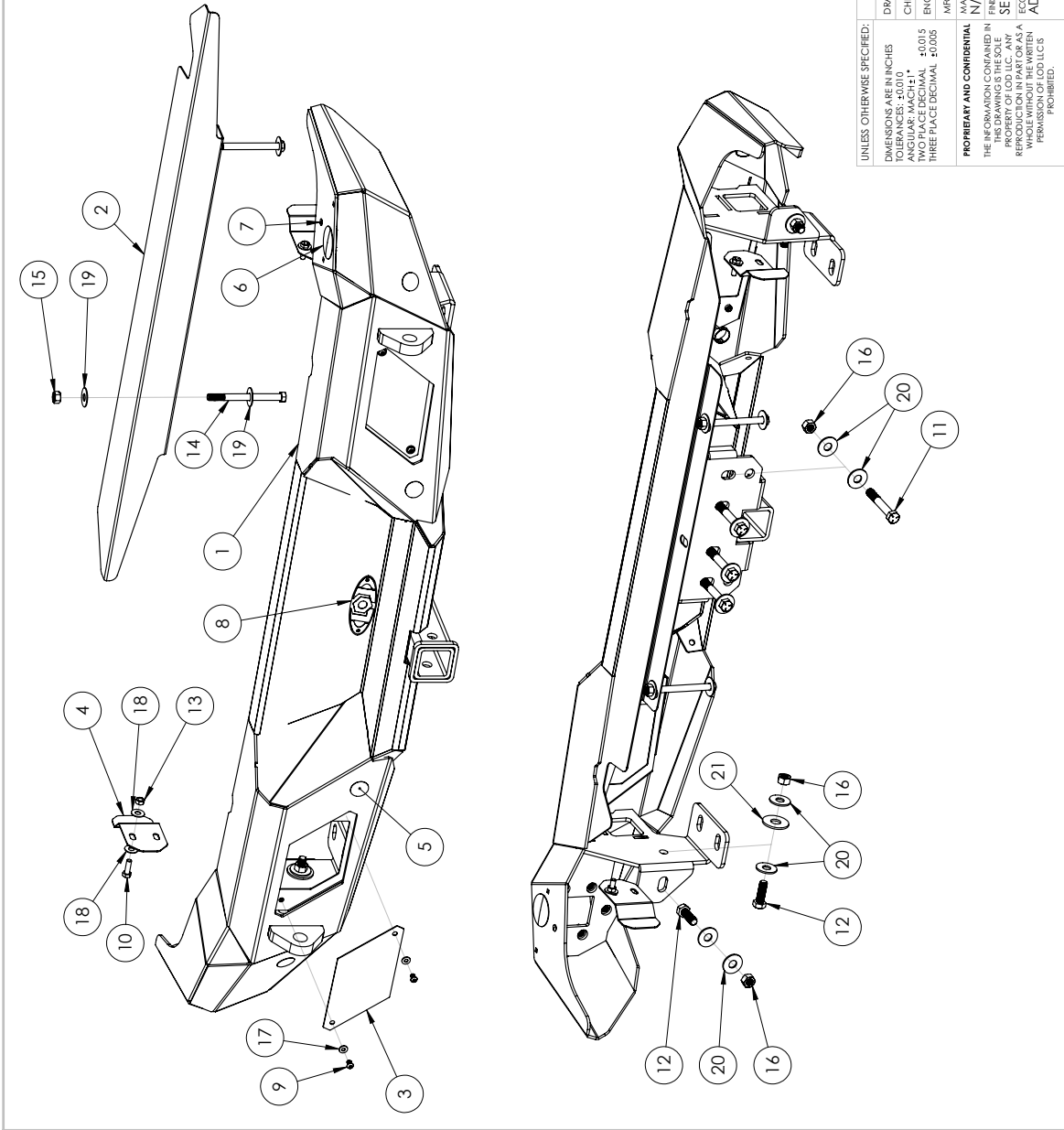


ITEM NO.	PART NUMBER	DESCRIPTION	QTY.
1	4BRB2100-01	2021 BRONCO REAR BUMPER WELDMENT	1
2	2BRB2100-22	TAILGATE FILLER PANEL	1
3	2JRL1800-29	BLANK FACE PLATE	2
4	2BBC2100-17	CORNER GUARD	2
5	HP1004	HOLE PLUG Ø1.125"	4
6	HP1007	HOLE PLUG Ø2.00"	1
7	HP1008	HOLE PLUG Ø0.375" BLACK	1
8	LOGO1001	DESTROYER LOGO - EMBOSSED	1
9	BHSCS252008/P	BHSCS 1/4-20 X 0.50 ZINC PLATE	4
10	HB311816ZPGR5	HEX BOLT 5/16-18 X 1.00 ZINC PLATE GR5	2
11	HB501356ZPGR5	HEX BOLT 1/2-13 X 3.50 HEX BOLT ZINC PLATE GR5	4
12	HB501324ZPGR5	HEX BOLT 1/2-13 X 1.50 HEX BOLT ZINC PLATE GR5	4
13	HN3118ZPGR5	HEX NUT 5/16-18 ZINC PLATE GR5	2
14	HB431480ZPGR5	HEX BOLT 7/16-14 X 5.00 HEX BOLT ZINC PLATE GR5	2
15	HN4314ZPGR5	HEX NUT 7/16-14 ZINC PLATE GR5	2
16	HN5013ZPGR5	HEX NUT 1/2-13 ZINC PLATE GR5	8
17	FW1209ZP	FLAT WASHER #12 X .56" ZINC PLATED	4
18	FW3114ZP	FLAT WASHER Ø5/16" X .875" ZINC PLATE	4
19	FW4318ZP	FLAT WASHER Ø7/16 X 1.25" ZINC PLATED	4
20	FW5022ZP	FLAT WASHER Ø1/2" X 1.375" ZINC PLATE	16
21	FW6228ZP	FLAT WASHER Ø5/8" X 1.75" ZINC PLATE	2

**NOTES:**

1. BRB2100 = BARE STEEL OPTION
2. BRB2101 = BLACK POWDER COAT
3. WEIGHT = APPROX 104 LBS

UNLESS OTHERWISE SPECIFIED:		NAME	DATE
DRAWN	MCH	8/1/2022	
CHECKED			
ENG APPR.			
MFG APPR.			
DIMENSIONS ARE IN INCHES			
TOLERANCES: ±0.010			
ANGULAR: MACH ±1°			
TWO PLACE DECIMAL ±0.015			
THREE PLACE DECIMAL ±0.005			
<b>PROPRIETARY AND CONFIDENTIAL</b> THE INFORMATION CONTAINED IN THIS DRAWING IS THE SOLE PROPERTY OF LOD LLC. ANY REPRODUCTION OR TRANSMISSION OF THIS INFORMATION IN WHOLE OR IN PART WITHOUT THE WRITTEN PERMISSION OF LOD LLC IS PROHIBITED.		LOD LLC. DESCRIPTION: <b>2021 BRONCO DESTROYER REAR BUMPER</b> DWG. NO. <b>BRB2100</b> <b>BRB2101</b> REV <b>B</b>	
SCALE: 1:7 SHEET SIZE: B SHEET 1 OF 2			





**2021 BRONCO  
DESTROYER SERIES**

**REAR BUMPER  
SHIPPING SHEET**

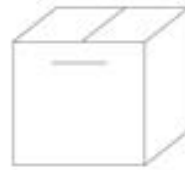
Sheet 1

Packaged by:

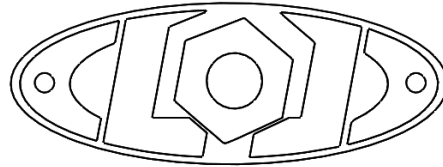
\_\_\_\_\_

On:

\_\_\_\_\_

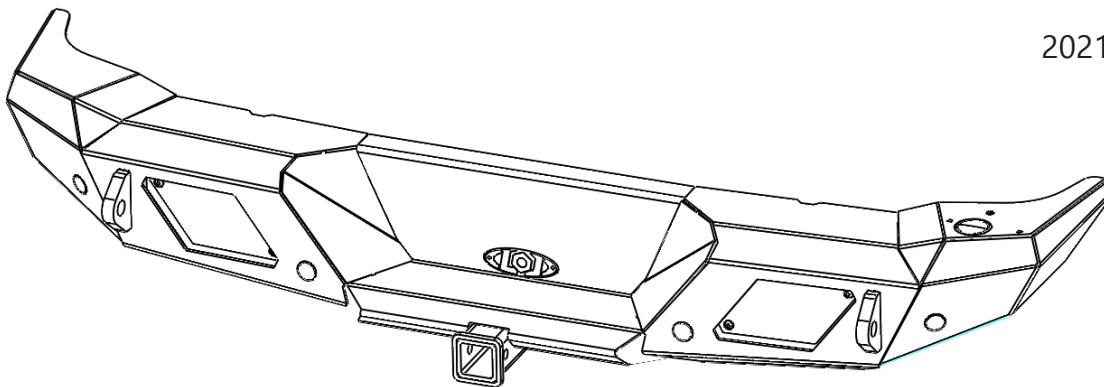


Hardware Kit  
(contents  
may vary)

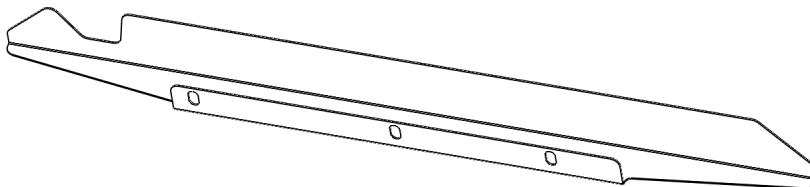


PACKAGED SEPERATE IF BUMPER IS BARE STEEL

LOD LOGO  
(x1)



2021 BRONCO Destroyer  
Rear Bumper  
Weldment



TAILGATE FILLER PANEL  
2BRB2100-22

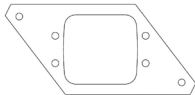
(x1)



**Destroyer Light Bezels**  
(STYLE MAY VARY, ONLY ONE SET INCLUDED)



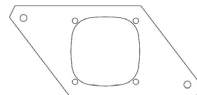
Blank / No light  
JLB1851



Universal  
Flush Mount  
Cube  
JLB1821



Rigid Pro-Series  
Dually  
JLB1841



Baja Designs  
Squadron  
Flush Mount  
JLB1863



Baja Designs  
Squadron  
JLB1865



Baja Designs  
Squadron  
Round  
JLB1868



LoD Radiant  
Pro LED Surface  
Mount  
JLB1869

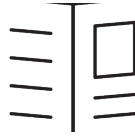




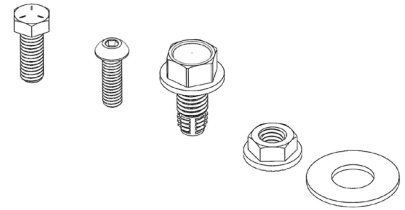
**2021 BRONCO**  
***DESTROYER SERIES***  
**REAR BUMPER**  
**HARDWARE KIT**

Packaged by:

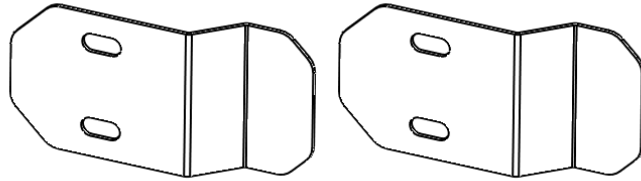
On:



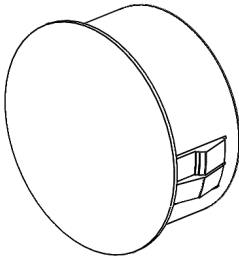
INSTRUCTION  
SHEET



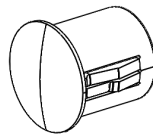
BOLT KIT  
(may vary)



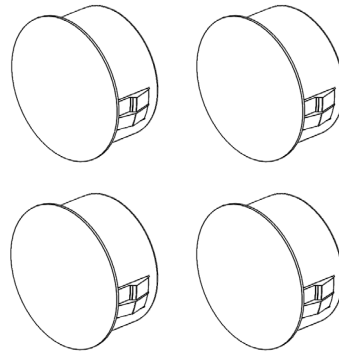
CORNER GUARD  
2BBC2100-17  
(x2)



HOLE PLUG Ø2.00"  
HP1007  
(x1)



HOLE PLUG Ø0.375"  
HP1008  
(x1)



HOLE PLUG Ø1.125  
HP1004  
(x4)





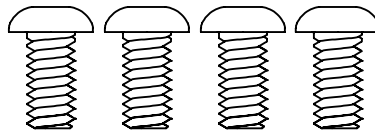
**2021 BRONCO  
DESTROYER SERIES**

**REAR BUMPER**

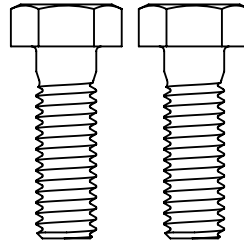
**Bolt Kit**

Packaged by:

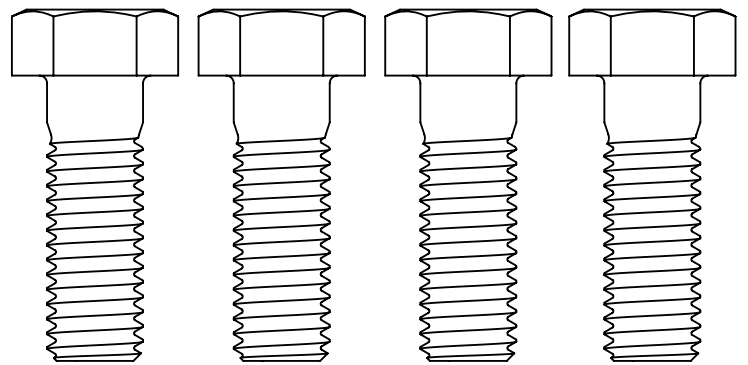
On: \_\_\_\_\_  
\_\_\_\_\_



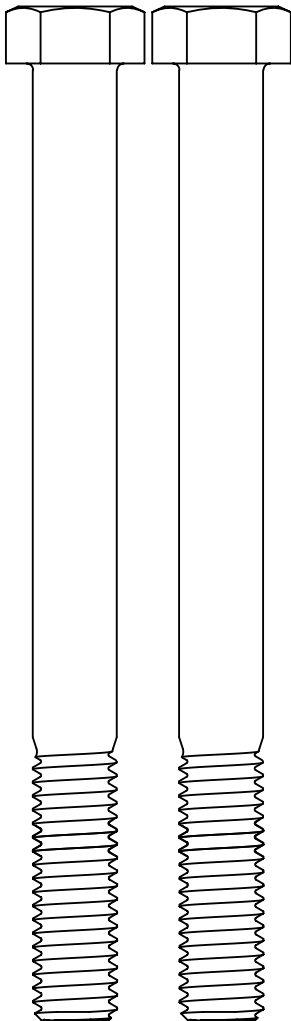
BUTTON HEAD  
SCREW 1/4-20 X .50"  
(94049)  
**(x4)**



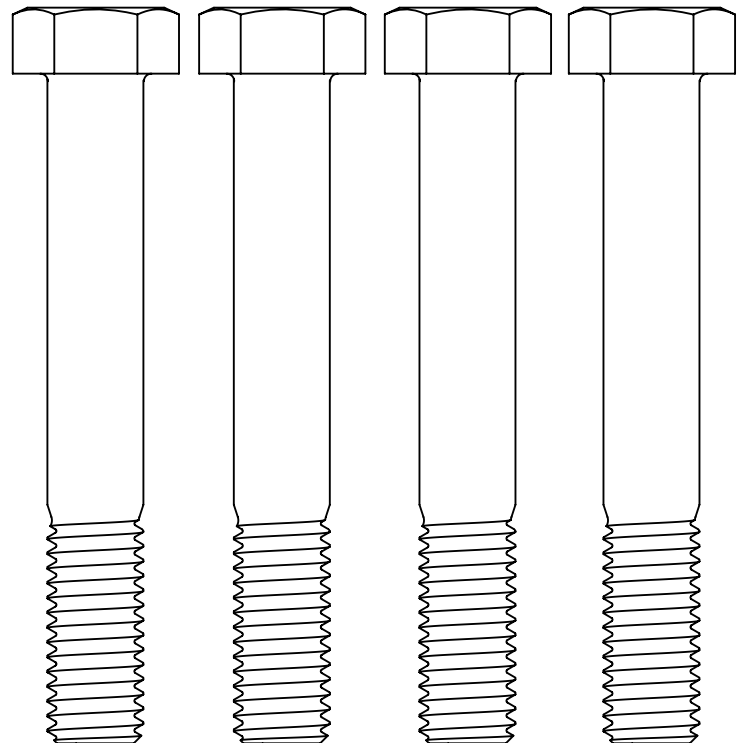
HEX BOLT 5/16-18 X 1.00"  
(113055)  
**(x2)**



HEX BOLT 1/2-13 X 1.50"  
(113209)  
**(x4)**

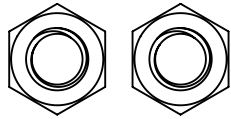


HEX BOLT 1/2-13 X 3.50"  
(113217)  
**(x4)**

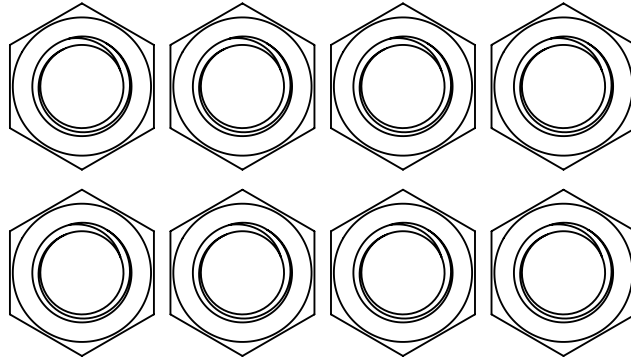


HEX BOLT 7/16-14 X 5.00"  
(13173)  
**(x2)**



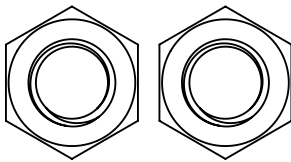


HEX NUT 5/16-18  
(36304)  
**(x2)**



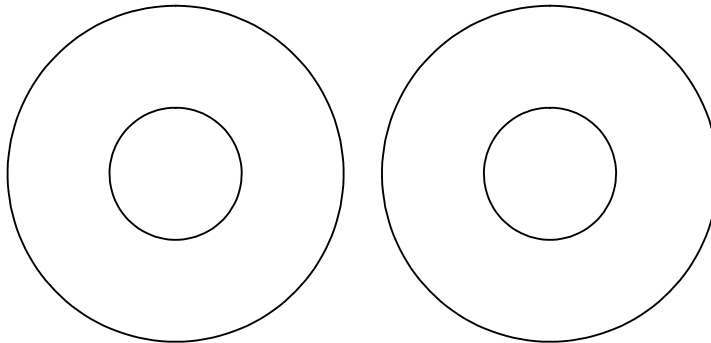
HEX NUT 1/2-13  
(0147968)

**(x8)**



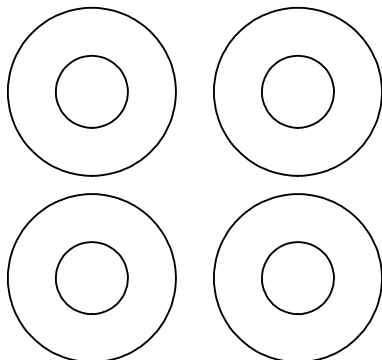
HEX NUT 7/16-14  
(1136308)

**(x2)**



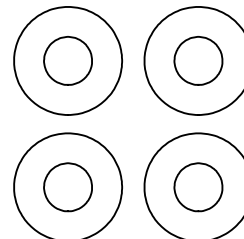
FLAT WASHER  
Ø5/8" X 1.75"  
(1133016)

**(x2)**



FLAT WASHER  
Ø5/16" X .875"  
(1133006)

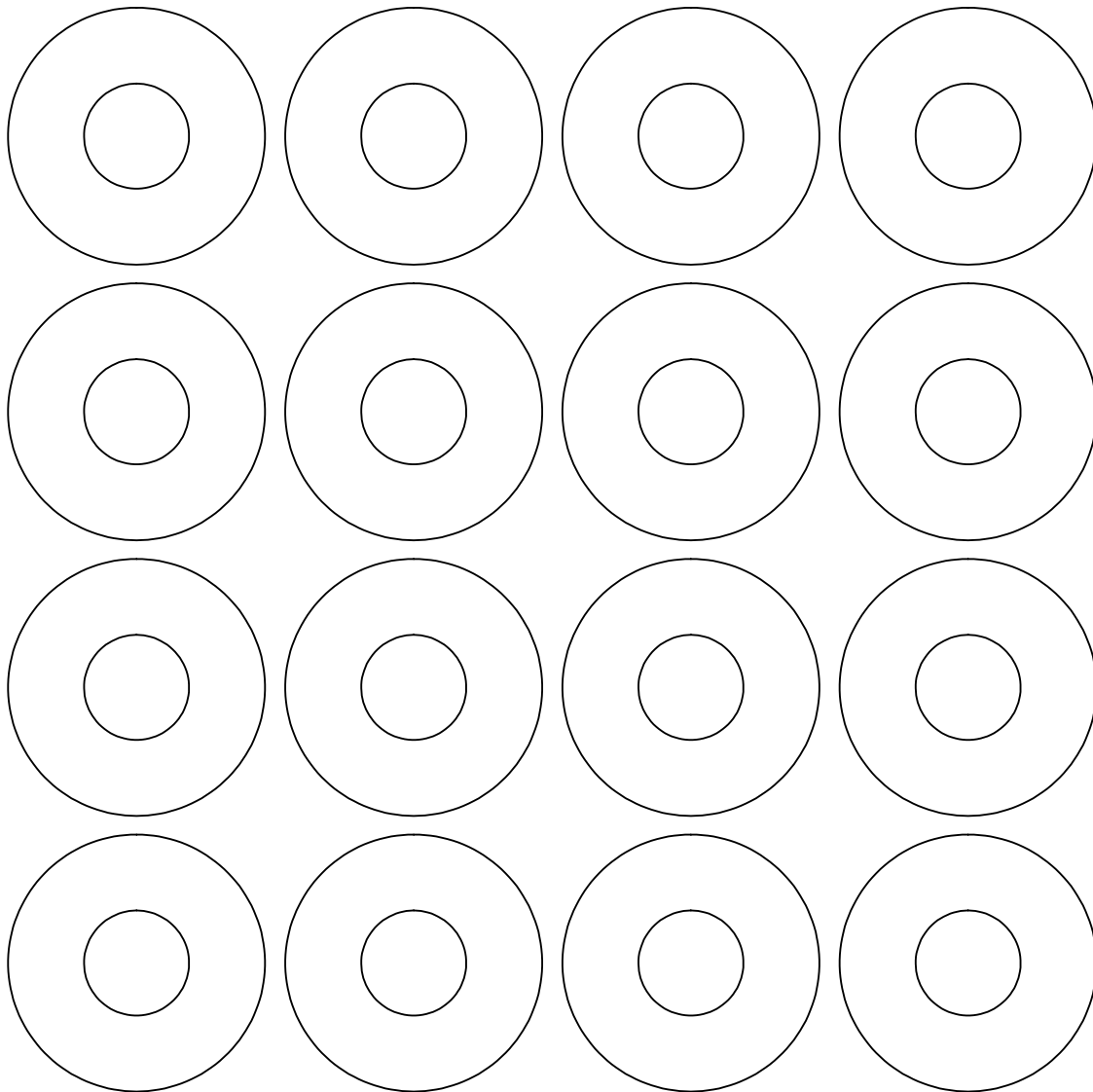
**(x4)**



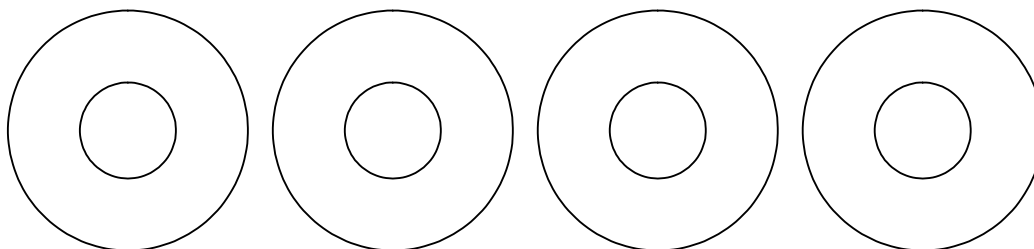
FLAT WASHER  
#12 X .56"  
(1133076)

**(x4)**





FLAT WASHER  
Ø1/2" X 1.375"  
(0159681)  
**(x16)**



FLAT WASHER  
Ø7/16" X 1.25"  
(0159680)  
**(x4)**

